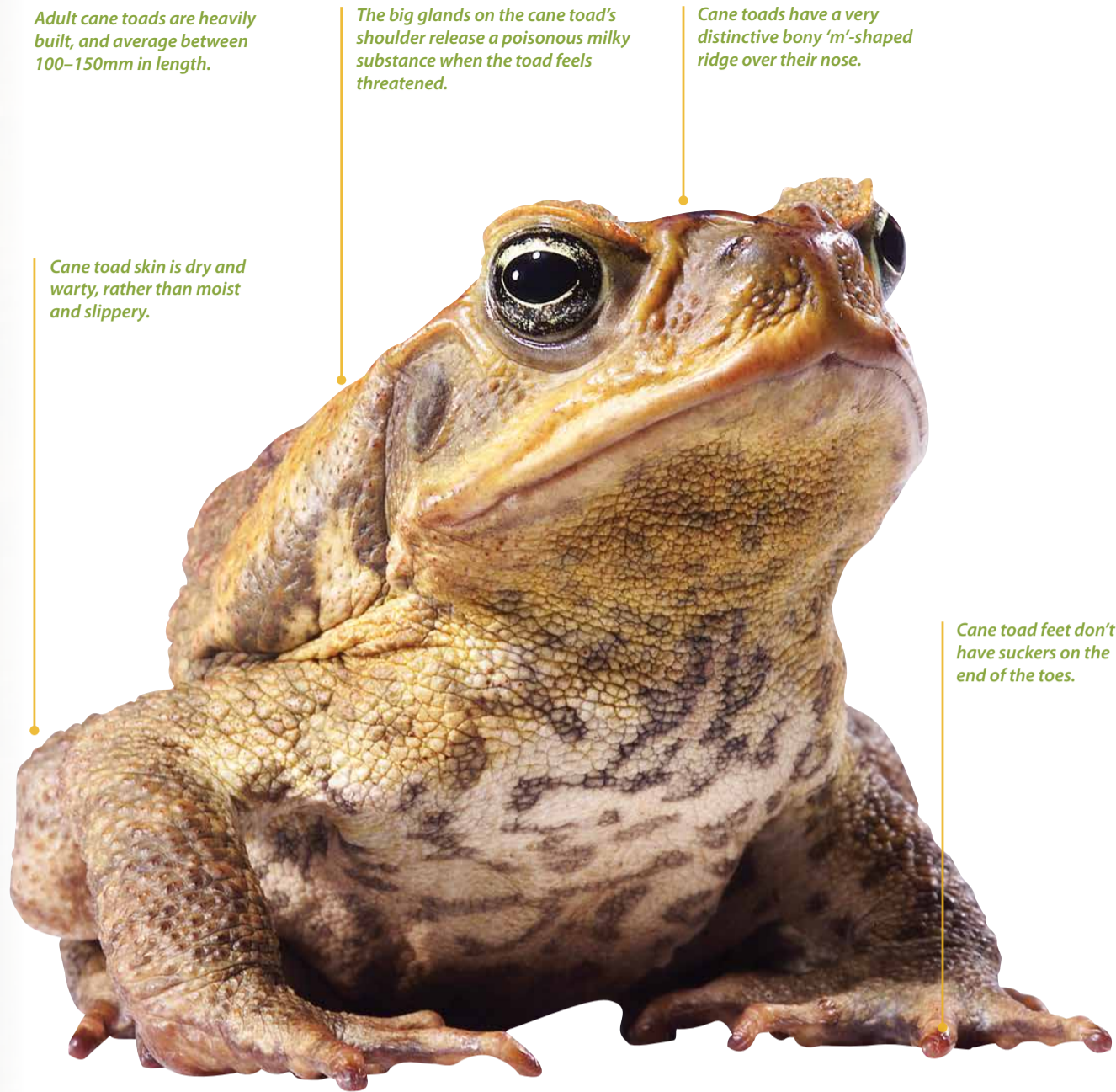


How to spot a toad



Adult cane toads are heavily built, and average between 100–150mm in length.

The big glands on the cane toad's shoulder release a poisonous milky substance when the toad feels threatened.

Cane toads have a very distinctive bony 'm'-shaped ridge over their nose.

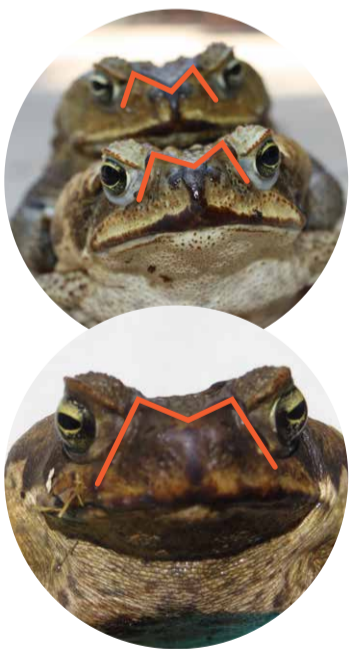
Cane toad skin is dry and warty, rather than moist and slippery.

Cane toad feet don't have suckers on the end of the toes.

It can be really hard to tell the difference between frogs and toad eggs, tadpoles and metamorphs (babies). Before you euthanise any animals, check with the Department of Biodiversity, Conservation and Attractions to make sure it is a cane toad.

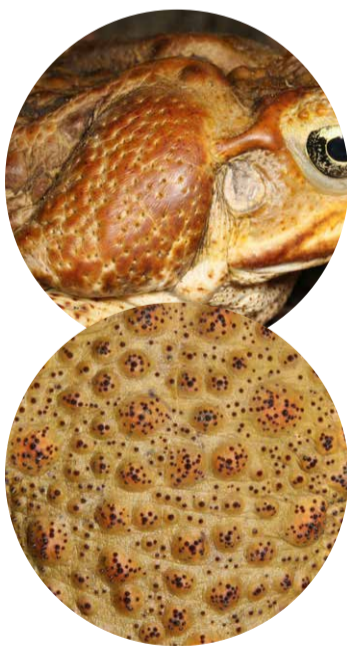
does your toad have

'M-shaped' bony ridge between its eyes?



Yes No

Dry warty skin?



Yes No

Poison glands on its shoulders (behind its round ears)?



Yes No

If you have ticked 'yes' to all the boxes you may have found a toad.

Send a photo to the Department on 0400 693 807 or email canetoads@dbca.wa.gov.au for further advice.



Department of Biodiversity, Conservation and Attractions

